



Xytect™ 2F

Insecticide

For foliar and systemic insect control in turfgrass (including sod farms), landscape ornamentals, listed fruit and nut trees and interior plantscapes.

KEEP OUT OF REACH OF CHILDREN.

CAUTION

SHAKE WELL
BEFORE USING

See additional precautionary statements and directions for use inside booklet. **STOP** – Read the label before use.

ACTIVE INGREDIENT:	
Imidacloprid, 1- [[6-Chloro-3-pyridinyl)methyl]-N- nitro-2-imidazolidinimine	21.4%
OTHER INGREDIENTS:	78.6%
TOTAL:	100.0%

Contains 2 pounds of imidacloprid per gallon.

EPA Reg. No. 42750-115-74779
EPA Est. No. 63416-MN-001

PRECAUCION AL USUARIO: Si usted no puede leer o entender inglés, no use este producto hasta que la etiqueta le haya sido explicada ampliamente.
(TO THE USER: If you cannot read or understand English, do not use this product until the label has been fully explained to you.)



©2011 Rainbow Treecare Scientific Advancement

Distributed By:
Rainbow Treecare
Scientific Advancements
11571 K-Tel Drive
Minnetonka, MN 55343
1-877-272-6747

Net Contents:
1 quart 32 fl oz (946 ml) www.treecarescience.com

PULL HERE TO OPEN

PF-25881-2

PROOF

THIS PROOF IS TO BE CHECKED FOR ACCURACY

Please review and approve **Text, Spelling, Copy Placement, Size, Shape, Colors, Unwind, and Dieline.** **Authorized signature** accepts responsibility for accuracy of all copy, color break and artwork. Cimarron Label is not liable for any discrepancies subsequently identified.

PLEASE NOTE: Due to color variance between printers/monitors, the colors represented by this proof cannot be deemed accurate. Please refer to a color matching system such as the Pantone Matching System for a truer representation of spot colors. **THIS PROOF IS NOT ACCURATE FOR COLOR-MATCH.**

WE CANNOT PROCESS THIS ORDER WITHOUT AN AUTHORIZED SIGNATURE

ARTWORK IS APPROVED **REVISED PROOF NEEDED**

Signed _____

Date _____

Please Return To: _____



4201 North Westport Avenue, Sioux Falls, South Dakota 57107
Phone: (605) 978-0451 • Fax: (605) 978-0463

Please indicate the correct unwind position

		Unwind Positions			
		Head-Off	Foot-Off	Right-Off	Left-Off
Wound Outside	1		2		3
	4				
Wound Inside	5		6		7
	8				

PROOF DATE: 1/20/11

CUSTOMER: RAINBOW TREECARE

JOB NUMBER: 49684

LABEL SIZE: 4.75" x 3.5"

LEAFLET FLAT SIZE: 4.75" x 21.5"

LEAFLET FOLDED SIZE: 4.75" x 2.75"

LABEL COLORS: BLACK

PATTERN VARNISH

LEAFLET "IN" COLORS: BLACK

LEAFLET "OUT" COLORS: YE MA CY BL

dieline does not print



FIRST AID

IF SWALLOWED

- Call a poison control center or doctor immediately for treatment advice.
- Have person sip a glass of water if able to swallow.
- Do not induce vomiting unless told to do so by a poison control center or doctor.
- Do not give anything by mouth to an unconscious person.

IF ON SKIN OR CLOTHING

- Take off contaminated clothing.
- Rinse skin immediately with plenty of water for 15 to 20 minutes.
- Call a poison control center or doctor for treatment advice.

IF IN EYES

- Hold eye open and rinse slowly and gently with water for 15 to 20 minutes.
- Remove contact lenses, if present, after the first 5 minutes, then continue rinsing eye.
- Call a poison control center or doctor for treatment advice.

In case of emergency call CHEMTREC toll free at 1-800-424-9300. Have a product container or label with you when calling a poison control center or doctor, or going for treatment.

Note to Physician: No specific antidote is available. Treat the patient symptomatically.

PRECAUTIONARY STATEMENTS

HAZARDS TO HUMANS AND DOMESTIC ANIMALS

CAUTION: Harmful if swallowed or absorbed through skin. Avoid contact with skin, eyes, or clothing. Wash thoroughly with soap and water after handling. Keep children or pets off treated area until spray is dry.

Applicators and Other Handlers Must Wear:

1. Long-sleeved shirt and long pants
2. Chemical-resistant gloves made of any waterproof material such as barrier laminate, butyl rubber, nitrile rubber, neoprene rubber, natural rubber, polyethylene, polyvinyl chloride (PVC) or viton. If you want more options, follow the instructions for category A on an EPA chemical-resistant category chart.
3. Shoes plus socks

Follow manufacturer's instructions for cleaning/maintaining personal protective equipment (PPE). If no such instructions for washables, use detergent and hot water. Keep and wash PPE separately from other laundry.

USER SAFETY RECOMMENDATIONS

User should:

1. Wash hands before eating, drinking, chewing gum, using tobacco or using the toilet.
2. Remove clothing immediately if pesticide gets inside. Then wash thoroughly and put on clean clothing.
3. Remove PPE immediately after handling this product. Wash the outside of gloves before removing. As soon as possible, wash thoroughly and change into clean clothing.

ENGINEERING CONTROLS STATEMENTS:

When handlers use closed systems, enclosed cabs, or aircraft in a manner that meets the requirements listed in the Worker Protection Standard (WPS) for agricultural pesticides [40 CFR 170.240(d)(4-6)], the handler PPE requirements may be reduced or modified as specified in the WPS.

ENVIRONMENTAL HAZARDS

This product is highly toxic to aquatic invertebrates. Do not apply directly to water, or to areas where surface water is present or to intertidal areas below the mean high water mark. Do not contaminate water when disposing of equipment washwaters.

This product is highly toxic to bees exposed to direct treatment or residues on blooming crops or weeds. Do not apply this product or allow it to drift to blooming crops or weeds if bees are visiting the treatment area.

This chemical demonstrates the properties and characteristics associated with chemicals detected in groundwater. The use of this chemical in areas where soils are permeable, particularly where the water table is shallow, may result in groundwater contamination.

RESTRICTION: Do not formulate this product into other end-use products.

DIRECTIONS FOR USE

It is a violation of Federal law to use this product in a manner inconsistent with its labeling.

Do not apply this product in a way that will contact workers or other persons, either directly or through drift. Only protected handlers may be in the area during application. For any requirements specific to your State or Tribe, consult the agency responsible for pesticide regulation.

Do not

PESTI
ner as
ers, fc
of chil

Handl
contai
fully s
label t
walk t
In spil
conta
or any

PESTI
may b

CON
gallon
rinse
recycl
or inc
ing. If

(non-r
ing cc
10 sec
water
equip
Drain
cedur

Pressu
tion e
after t
cation
posal.
rinse -
after t

IONS

using tobacco
le. Then wash
ct. Wash the
le, wash thor-

r aircraft in a
er Protection
.240 (d) (4-6)),
fied as speci-

S

Do not apply
nt or to inter-
contaminate

treatment or
is product or
e visiting the

ristics associ-
of this chemi-
e the water
n.

ther end-use

anner incor-

kers or other
ted handlers
nts specific
for pesticide

STORAGE AND DISPOSAL

Do not contaminate water, food, or feed by storage or disposal.

PESTICIDE STORAGE: Store in a cool, dry place and in such a manner as to prevent cross contamination with other pesticides, fertilizers, food, and feed. Store in original container and out of the reach of children, preferably in a locked storage area.

Handle and open container in a manner as to prevent spillage. If the container is leaking or material spilled for any reason or cause, carefully sweep material into a pile. Refer to Precautionary Statements on label for hazards associated with the handling of this material. Do not walk through spilled material. Dispose of pesticide as directed below. In spill or leak incidents, keep unauthorized people away. You may contact Chemtrec at 800-424-9300 for decontamination procedures or any other assistance that may be necessary.

PESTICIDE DISPOSAL: Wastes resulting from the use of this product may be disposed of on site or at an approved waste disposal facility.

CONTAINER DISPOSAL: Non-refillable containers (1, 2.5, 30 & 55 gallon): Do not reuse or refill this container. Triple rinse or pressure rinse container (or equivalent) promptly after emptying. Offer for recycling, if available or puncture and dispose of in a sanitary landfill, or incineration, or if allowed by state and local authorities, by burning. If burned, stay out of smoke.

(non-refillable <5 gallons): Triple rinse as follows: Empty the remaining contents into application equipment or a mix tank and drain for 10 seconds after the flow begins to drip. Fill the container ¼ full with water and recap. Shake for 10 seconds. Pour rinsate into application equipment or a mix tank or store rinsate for later use or disposal. Drain for 10 seconds after the flow begins to drip. Repeat this procedure two more times.

Pressure rinse as follows: Empty the remaining contents into application equipment or a mix tank and continue to drain for 10 seconds after the flow begins to drip. Hold container upside down over application equipment or mix tank or collect rinsate for later use or disposal. Insert pressure rinsing nozzle in the side of the container, and rinse at about 40 PSI for at least 30 seconds. Drain for 10 seconds after the flow begins to drip.

NON-AGRICULTURAL USE REQUIREMENTS

The requirements in this box apply to uses of this product that are NOT within the scope of the Worker Protection Standard for agricultural pesticides (40 CFR part 170). The WPS applies when this product is used to produce agricultural plants on farms, forests, nurseries, or greenhouses.

Keep children and pets off treated area until dry.

AGRICULTURAL USE REQUIREMENTS

Use this product only in accordance with its labeling and with the Worker I Protection Standard, 40 CFR part 170. This Standard contains requirements for the protection of agricultural workers on farms, forests, nurseries, and greenhouses, and handlers of agricultural pesticides. It contains requirements for training, decontamination, notification, and emergency assistance. It also contains specific instructions and exceptions pertaining to the statements on this label about personal protective equipment (PPE) and restricted-entry interval. The requirements in this box only apply to uses of this product that are covered by the Worker Protection Standard.

Do not enter or allow worker entry into treated areas during the restricted-entry interval (REI) of 12 hours.

Exception: If the product is applied by drenching, the Worker Protection Standard, under certain circumstances, allows workers to enter the treated area if there will be no contact with anything that has been treated.

PPE required for early entry to treated areas that is permitted under the Worker Protection Standard and that involves contact with anything that has been treated, such as plants, soil, or water is:

1. Coveralls
2. Chemical-resistant gloves made of any waterproof material such as barrier laminate, butyl rubber, nitrile rubber, neoprene rubber, natural rubber, polyethylene, polyvinyl chloride (PVC) or viton. If you want more options, follow the instructions for category A on an EPA chemical-resistant category chart.
3. Shoes plus socks

PEST

North

Asiat
Euroq
Gree
May
Japa
Orier
Billbu
Annu
Black

Euroj

Mole

Xyte

bugs

Xytect™

Home li
family r
Playgrou
Xytect™
be mad
is achiev
and wh
the soil
are norr
thatch, i
Apply 1
ft). Make
weevil, ;
For chir
(equal
applicat
For con
egg hat

APPLICATION TO TURFGRASS

Xytect™ 2F Insecticide will control the following soil inhabiting pests and larvae found in turfgrass:

PEST	SCIENTIFIC NAME
Northern & Southern masked chafers	<i>Cyclocephala borealis</i> , <i>C. immaculata</i> , and/or <i>C. lurida</i>
Asiatic garden beetle	<i>Maladera castanea</i>
European chafer	<i>Rhizotrogus majalis</i>
Green June beetle	<i>Cotinis nitida</i>
May or June beetle	<i>Phyllophaga spp.</i>
Japanese beetle	<i>Popillia japonica</i>
Oriental beetle	<i>Anomala orientalis</i>
Billbugs	<i>Sphenophorus spp.</i>
Annual bluegrass weevil	<i>Hyperodes spp.</i>
Black turfgrass ateniuss	<i>Ataenius spretulus</i> and <i>Aphodius spp.</i>
European Crane Fly	<i>Tipula paludosa</i>
Mole crickets	<i>Scapteriscus spp.</i>

Xytect™ 2F Insecticide will suppress cutworms and chinch bugs.

Xytect™ 2F Insecticide can be applied on turfgrass in the following sites:

Home lawns, Business and office complexes, Shopping complexes, Multi-family residential complexes, Golf courses, Airports, Cemeteries, Parks, Playgrounds, Athletic fields, Sod farms*.

Xytect™ 2F Insecticide has adequate residual activity that applications can be made preceding the egg-laying activity of the target pests. Best control is achieved when applications are made prior to egg hatch of the pests and when rainfall or irrigation after application will penetrate vertically in the soil column carrying the active ingredient into the zone where insects are normally located. In order to move the active ingredient through the thatch, irrigate if rainfall does not occur within 24 hours after application.

Apply 1.25 to 1.6 pints per acre (equivalent to 0.46 to 0.6 fl oz per 1000 sq ft). Make application prior to egg hatch of grubs, billbugs, annual bluegrass weevil, and European Crane Fly to maximize control.

For chinch bugs (suppression) and mole crickets apply 1.6 pints per acre (equivalent to 0.6 fl oz per 1000 sq ft). For suppression of chinchbugs, make application before the hatching of the first instar nymphs.

For control of mole crickets make application before or during the peak egg hatch period. If adults or large nymphs are actively tunneling, combine

applications of Xytect™ 2F Insecticide with a remedial insecticide. Follow label instructions for other insecticides when tank-mixing.

Consult your local turf, state Agricultural Experiment Station, or State Extension Service Specialists for more specific information regarding timing of application.

APPLICATION EQUIPMENT FOR USE ON TURFGRASS

Dilute Xytect™ 2F Insecticide with enough water to provide adequate volume to promote thorough distribution into the pest zone. Use only accurately calibrated equipment for application to turfgrass. Apply a uniform, coarse droplet spray, using a low pressure setting to eliminate off target drift. Perform calibration on a regular basis to ensure that equipment is distributing product properly.

RESTRICTIONS FOR TURFGRASS USE:

- Do not exceed a total of 1.6 pints application (0.4 lb of active ingredient) per acre per year.
- Do not mow turf or lawn area, until after adequate irrigation or rainfall has occurred.
- Do not apply when infested turfgrass areas are waterlogged or soil beneath turf is saturated with water. These conditions prevent thorough and consistent distribution.
- * Do not use in Arizona unless otherwise directed by supplemental labeling.

APPLICATION TO ORNAMENTALS

Xytect™ 2F Insecticide can be applied to ornamental plants in commercial and residential landscapes and interior plantscapes. Xytect™ 2F Insecticide is a systemic insecticide that is transported within the plant system from the roots to upper foliage. Xytect™ 2F Insecticide must be applied into a growing area of the plant that allows absorption of the active ingredient. Adding soluble nitrogen type fertilizers to the spray solution when appropriate can promote the uptake of the active ingredient.

Application can be made by foliar application or soil applications; including soil injection, drenches, and broadcast sprays. Foliar applications offer locally systemic activity against insect pests.

The systemic translocation of active ingredient will be slower when applied to woody plants with soil applications. This delay can take 60 days or longer depending on species and size of plant. To offset this, make applications before anticipated pest infestation.

RESTRICTION: For outdoor ornamentals, applications cannot exceed a total of 1.6 pints (0.4 lb of active ingredient) per acre per year.

Juct that are
lard for agri-
s when this
rms, forests,

IENTS

and with the
andard con-
orkers on
rs of agricul-
contamina-
s contains
) statements
t (PPE) and
only apply to
r Protection

s during the

Worker Pro-
s workers to
nything that

mitted under
act with any-
er is:

material such
oprene rub-
de (PVC) or
ons for cate-
:

PE

Ac
Ag
Ar
Bl
Eu
Fl

Ja
La
Le

Le

Le
M
Pi
Pi
Ps

Rc

Rc

Sa

Th

W

W

**App
Soil**

Mix r
tion i
1 gall
soluti
vary

insecticide. Follow
 label directions.

Station, or State
 regarding tim-

FOR GRASS

Provide adequate water
 before use. Use only accu-

Apply a uniform,
 liminate off target
 equipment is dis-

of active ingredi-

irrigation or rainfall

Waterlogged or soil
 conditions prevent thor-

by supplemental

Plants in commercial
 Xytect™ 2F Insecticide
 application system from the
 applied into a grow-

Applications; including
 applications offer

Water when applied
 60 days or longer
 make applications

Application cannot exceed a
 1 year.

SOIL APPLICATION TO ORNAMENTAL AND NON-BEARING FRUIT & NUT TREES, SHRUBS, FLOWERS AND GROUND COVERS

(Only for Industrial, Commercial Buildings, Residential, Landscaped
 Planting Areas) (Including State, National, and Private Wooded
 and Forested Areas)

PEST	RATE
Adelgids Aphids Armored scales (suppression) Black vine weevil larvae Eucalyptus longhorned borer Flatheaded borers (including bronze birch, alder, and emerald ash borer) Japanese beetles Lace bugs Leaf beetles (including elm and viburnum leaf beetles) Leafhoppers (including glasswinged sharpshooter) Leafminers Mealybugs Pine tip moth larvae Plant bugs Psyllids Roundheaded borers (including Asian Longhorned beetles) Royal Palm Bugs Sawfly larvae Soft scales Thrips (suppression) White grub larvae Whiteflies	<p>For TREES – Use the following rates as a function of tree diameter at breast height (DBH): Apply 0.1 to 0.4 fl oz (3 to 12 ml) per inch of trunk diameter (DBH). You may use the higher rate (0.3 - 0.4 fl oz) only for trees greater than 15 DBH to control the following pests: Asian Longhorned beetle, Emerald Ash Borer, Eucalyptus Longhorned borer, Bronze birch borer, and Alder borer.</p> <p>For SHRUBS – Apply 0.1 to 0.2 fl oz (3 to 6 mL) per foot of shrub height.</p> <p>Restriction: – Do not apply more than 25.6 fl oz (0.4 lb of active ingredient) per acre per year. Diameter at Breast Height (DBH) = is measured at 4.5 feet from the ground.</p>

Application Techniques: TREES

Soil Injection

Mix required dosage in sufficient water to inject an equal amount of solution in each hole. For concentrate injectors mix required dose with up to 1 gallon of water per DBH inch. Maintain a low pressure and use sufficient solution for distribution of the liquid into treatment zone. Dilution rate may vary depending on equipment used, tree size and application rate. Refer

to the instructions for injector equipment being used for guidance.

GRID SYSTEM: Make applications in a grid pattern on 2.5 foot centers within the drip line of the tree.

CIRCLE SYSTEM: Make applications in holes evenly spaced approximately 2 to 3 feet apart in a circle within the drip line of the tree. Larger trees may require additional application circles.

BASAL SYSTEM: Make applications into holes evenly spaced around the base of the tree trunk no more than 6 to 12 inches out from the base.

Soil Drench

Uniformly apply the dosage in no less than 10 gallons of water per 1,000 sq. ft. as a drench around the base of the tree, directed to the root zone. Any plastic or other barrier that may prevent drench solution from reaching the root zone must be removed.

FOR ALL APPLICATION TECHNIQUES:

- Inject an equal amount of water and solution in each hole.
- Use low pressure and sufficient solution for thorough distribution into the treatment zone.
- Maintain soil moisture for 7 to 10 days.
- Application to trees already heavily infested with borers listed may not prevent the eventual loss of the trees.

RESTRICTIONS FOR TREES:

- Do not use less than 4 holes per tree.
- No Soil Injection Applications Allowed In Nassau or Suffolk Counties of New York.
- Do not apply more than 25.6 fl oz (0.4 lb of active ingredient) per acre per year.

Application Techniques: SHRUBS

Soil Injection:

Apply to individual plants using dosage indicated.



Technical Support
1-877-272-6747

www.treecarescience.com

Soil Drench:

Uniformly apply the dosage in no less than 10 gallons of water per 1,000 sq. ft. as a drench around the base of the tree, directed to the root zone. Remove plastic or any other barrier that will stop solution from reaching the root zone.

- Mix required dosage in sufficient water to inject an equal amount of solution in each hole.
- Maintain a low pressure and use sufficient solution for distribution of the liquid into the treatment zone.
- Maintain soil moisture for 7 to 10 days.

RESTRICTIONS FOR SHRUBS:

- Do not use less than 4 holes per shrub.
- No Soil Injection Applications Allowed In Nassau or Suffolk Counties of New York.
- Do not apply more than 25.6 fl oz (0.4 lb of active ingredient) per acre per year.

APPLICATION EQUIPMENT FOR FOLIAR APPLICATIONS

Xytect™ 2F Insecticide mixes readily with water and may be used in many types of application equipment. Add a commercial spreader/sticker to promote coverage on hard to wet foliage such as holly, pine, or ivy.

Xytect™ 2F Insecticide is compatible with many commonly used fungicides, miticides, liquid fertilizers, and other insecticides. If applicator has no prior experience with a particular tank mix; check physical compatibility by making a small clear jar test using correct proportions of products to be tank mixed.

RESTRICTIONS

- Keep children and pets off treated area until dry.
- Do not apply more than 1.6 pt (0.4 lb of active ingredient) per acre per year.
- Not for use in commercial greenhouses, nurseries, or on grasses grown for seed, or on commercial fruit and nut trees.
- Do not graze treated areas or use clippings from treated areas for feed or forage.
- Do not apply through any irrigation system.
- Do not allow puddling of irrigation water following application.
- Do not apply Xytect™ 2F Insecticide to areas which are water logged or saturated, which will not allow penetration into the root zone of the plant.
- Treated areas may be replanted with any crop specified on an imidacloprid label, or with any crop for which a tolerance exists for the active ingredient.
- For crops not listed on an imidacloprid label, or for crops for which no tolerances for the active ingredient have been established, a 12-month plant-back interval is required.

FOLIAR APPLICATION TO ORNAMENTAL AND NON-BEARING FRUIT & NUT TREES, SHRUBS, EVERGREENS, FLOWERS, FOLIAGE PLANTS, GROUNDCOVERS and INTERIOR PLANTSCAPES

(Only for Industrial, Commercial Buildings, Residential and Landscaped Planting Areas)

PEST	RATE
Adelgids Aphids Honeylocust Plant Bug Diptera (Including Rhododendron gall midge, Honeylocust pod gall midge) Froghopper Galls (Including Hickory stem gall) Japanese beetles Lace bugs Leaf beetles (Including elm and viburnum leaf beetles) Leafhoppers (Including glassy-winged sharpshooter) Leafminers (Including Boxwood leafminer) Mealybugs Planthoppers Psyllids Sawfly larvae Scales (Including Lecanium, Azalea bark, Calico, Cottony Camellia, Cottony maple, Cottony taxus) Spittlebugs Thrips (suppression) (Including Flower, Pear and Pine thrips) Treehoppers Weevils (Including white Pine and Black vine) Whiteflies	Apply 1.5 fluid ounces (45mL) per 100 gal of water. Make foliar applications before high pest populations become established. Reapply on an as-needed basis. For FLOWERS and GROUNDCOVERS – Apply 0.46 to 0.6 fluid ounces (14 to 17 mL) per 1000 sq ft.
To control White grub larvae (such as Japanese beetle larvae, Chafer, <i>Phyllophaga</i> spp., Asiatic garden beetle, Oriental beetle), apply 0.46 to 0.6 fl oz (14 to 17 mL) per 1,000 sq. ft.	

Make broa uniformly c per 1,000 : irrigate if r.

Refer to us cerning ad

Application

Apply as a ing or app lished plan

RESTRICTI
active ingr

PEST

Yellow r
 Pecan s
 Black m
 Pecan s
 Pecan l

RESTRICT

- Do not Insectici
 - Do not i
 - Allow 1(
 - Do not mental I
- 1 The amo depends a standa trees wit Xytect™

esidential

per 100
n(A) as a
allons of

Xytect™ 2F

y of harvest.

pple,

5 ml) per
oz per acre
needed
complete.

- For control of rosy apple aphid, apply prior to leafrolling caused by the pest.
- For first generation leafminer control, make first application as soon as petal fall is complete. Greatest leafminer control will result from the earliest possible application. For second and succeeding generations of leafminer, optimal control is obtained from applications made early in the adult flight against egg and early instar larvae. A second application may be required 10 days later if severe pressure continues or if generations are overlapping. A single application may result in suppression only. Xytect™ 2F Insecticide will not control late stage larvae.
- For San Jose Scale, time applications to the crawler stage. Treat each generation.
- For late season (preharvest) control of leafhopper species, apply Xytect™ 2F Insecticide while most leafhoppers are in the nymphal stage.
- For optimal control of mealybug, insure good spray coverage of the trunk and scaffolding limbs or other resting sites of the mealybug.

RESTRICTIONS FOR RESIDENTIAL POME FRUITS:

- Do not apply more than 6.0 fluid ounces per acre in a single application. Do not make more than 4 applications per acre per year.
- Allow 10 or more days between applications.
- Allow at least 7 days between last application and harvest.
- Not for use in California for control on pears.

ANT MANAGEMENT PROGRAMS

Use Xytect™ 2F Insecticide to control aphids, scale insects, mealybugs and other sucking pests on ornamentals with ant populations because it removes honeydew as a food source. To enhance control of ants, supplement with residual sprays, bait placements or other ant control tactics.

CONDITIONS OF SALE AND WARRANTY

The DIRECTIONS FOR USE of this product reflect the opinion of experts based on field use and tests. The directions are believed to be reliable and must be followed carefully. However, it is impossible to eliminate all risks inherently associated with use of this product. Crop injury, ineffectiveness, or other unintended consequences may result because of such factors as weather conditions, presence of other materials, or the manner of use or application, all of which are beyond the control of RAINBOW TREECARE SCIENTIFIC ADVANCEMENTS, its Supplemental Distributors, or the Seller. TO THE EXTENT CONSISTENT WITH APPLICABLE LAW, all such risks shall be assumed by the Buyer.

Rainbow Treecare Scientific Advancements, its Supplemental Distributors and the Seller warrant that this product conforms to the chemical description on the label and is reasonably fit for the purposes referred to in the Directions for Use subject to the inherent risks referred to above. TO THE EXTENT CONSISTENT WITH APPLICABLE LAW, NEITHER RAINBOW TREECARE SCIENTIFIC ADVANCEMENTS NOR ITS SUPPLEMENTAL DISTRIBUTORS MAKE ANY OTHER EXPRESS OR IMPLIED WARRANTY OF FITNESS FOR ANY PARTICULAR PURPOSE OR OF MERCHANTABILITY OR ANY OTHER EXPRESS OR IMPLIED WARRANTY. TO THE EXTENT CONSISTENT WITH APPLICABLE LAW, THIS WARRANTY DOES NOT EXTEND TO, AND THE BUYER SHALL BE SOLELY RESPONSIBLE FOR, ANY AND ALL LOSS OR DAMAGE WHICH RESULTS FROM THE USE OF THIS PRODUCT IN ANY MANNER WHICH IS INCONSISTENT WITH THE LABEL DIRECTIONS. TO THE EXTENT CONSISTENT WITH APPLICABLE LAW, BUYER'S EXCLUSIVE REMEDY AND THE EXCLUSIVE LIABILITY OF RAINBOW TREECARE SCIENTIFIC ADVANCEMENTS, ITS SUPPLEMENTAL DISTRIBUTORS AND THE SELLER FOR ANY AND ALL CLAIMS, LOSSES, DAMAGES, OR INJURIES RESULTING FROM THE USE OR HANDLING OF THIS PRODUCT, WHETHER OR NOT BASED IN CONTRACT, NEGLIGENCE, STRICT LIABILITY IN TORT OR OTHERWISE, SHALL BE LIMITED, AT THE MANUFACTURER'S OPTION, TO REPLACEMENT OF OR THE REPAYMENT OF THE PURCHASE PRICE FOR THE QUANTITY OF PRODUCT WITH RESPECT TO WHICH DAMAGES ARE CLAIMED. TO THE EXTENT CONSISTENT WITH APPLICABLE LAW, when Buyer suffers losses or damages resulting from the use or handling of this product (including claims based on contract, negligence, strict liability, or other legal theories), Buyer must promptly notify Seller in writing of any claims to be eligible to receive either remedy stated above. TO THE EXTENT CONSISTENT WITH APPLICABLE LAW, IN NO CASE SHALL RAINBOW TREECARE SCIENTIFIC ADVANCEMENTS, ITS SUPPLEMENTAL DISTRIBUTORS, OR THE SELLER BE LIABLE FOR CONSEQUENTIAL, SPECIAL OR INDIRECT DAMAGES RESULTING FROM THE USE OR HANDLING OF THIS PRODUCT. RAINBOW TREECARE SCIENTIFIC ADVANCEMENTS, its Supplemental Distributors, and the Seller offer this product, and the Buyer accepts it, subject to the foregoing Conditions of Sale and Warranty, which may be varied only by agreement in writing signed by a duly authorized representative of RAINBOW TREECARE SCIENTIFIC ADVANCEMENTS.

No em
MENTS
exceed

Rz

©2011
Xytect

WARRANTY
No employee or agent of RAINBOW TREECARE SCIENTIFIC ADVANCEMENTS, its Supplemental Distributor, or the Seller is authorized to vary or exceed the terms of this Warranty in any other manner.

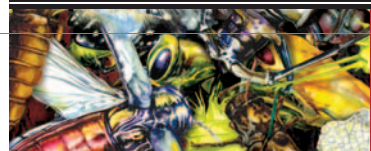
No employee or agent of RAINBOW TREECARE SCIENTIFIC ADVANCEMENTS, its Supplemental Distributor, or the Seller is authorized to vary or exceed the terms of this Warranty in any other manner.

...ntal Distributors
...hemical descrip-
...ferred to in the
...above. TO THE
...ER RAINBOW
...EMENTAL DIS-
...ARRANTY OF
...CHANTABILITY
...THE EXTENT
...Y DOES NOT
...ONSIBLE FOR,
...M THE USE OF
...ENT WITH THE
...H APPLICABLE
...LIABILITY OF
...SUPPLEMEN-
...ALL CLAIMS,
...USE OR HAN-
...IN CONTRACT,
...ISE, SHALL BE
...ACEMENT OF
...QUANTITY OF
...IMED. TO THE
...er suffers losses
...duct (including
...legal theories),
...o be eligible to
...SISTENT WITH
...RE SCIENTIFIC
...R THE SELLER
...CT DAMAGES
...ODUCT. RAIN-
...emental Distrib-
...its, subject to
...be varied only
...representative of



Distributed By:
Rainbow Treecare Scientific Advancements
11571 K-Tel Drive
Minnetonka, MN 55343
1-877-272-6747
www.treecarescience.com

©2011 Rainbow Treecare Scientific Advancements
Xytect is a trademark of Rainbow Treecare Scientific Advancements



Net Contents:
1 quart
32 fl oz (946 ml)

XytectTM 2F Insecticide

For foliar and systemic insect control in turfgrass (including sod farms), landscape ornamentals, listed fruit and nut trees and interior plantscapes.

KEEP OUT OF REACH OF CHILDREN.
CAUTION **SHAKE WELL BEFORE USING**

See additional precautionary statements and directions for use inside booklet. **STOP** – Read the label before use.

ACTIVE INGREDIENT:	
Imidacloprid, 1-[(6-Chloro-3-pyridinyl)methyl]-N-nitro-2-imidazolidinimine	21.4%
OTHER INGREDIENTS:	78.6%
TOTAL:	100.0%

Contains 2 pounds of imidacloprid per gallon.

EPA Reg. No. 42750-115-74779
EPA Est. No. 63416-MN-001

PRECAUCION AL USUARIO: Si usted no puede leer o entender inglés, no use este producto hasta que la etiqueta le haya sido explicada ampliamente.
(TO THE USER: If you cannot read or understand English, do not use this product until the label has been fully explained to you.)

AD122910

